

# ROCKWOOD

T  
R  
A  
V  
E  
L  
  
T  
R  
A  
I  
L  
E  
R  
S

## ROCKWOOD MINILITE ULTRA LITE

Rockwood's Mini Lite and Ultra Lite provide one of the best values in the lightweight travel trailer market. Both models are built with superior build quality that exceed Rockwood's reputation.

### POWER PACKAGE

#### Option Includes:\*

- 15A Receptacle Charging w/ Combimaster Power Sharing Feature
- 3000W Inverter/Charger w/160A Charging Capacity
- 13,500 BTU Soft Start Power Saver A/C
- 5" Touchscreen monitor
- 50A DC/DC Charger —New!
- 460Ah Mastervolt Lithium Battery
- Integrated 60A MPPT Charge Controller
- (5) 200W GoPower® Solar Panels
- Centralized System Disconnect Switch

\*Power Package available in Select Mini Lite Models Only.



Look for the Power Package Icon Next to the Floorplan.

### WeRV App Control

Your RV is equipped with Lippert™ One Control®. This WiFi app-based interface provides comfort and convenience to control and monitor your RV's functions. Visit [lippert.com/onecontrol](http://lippert.com/onecontrol) for a complete list of capabilities.



Download  
Today!



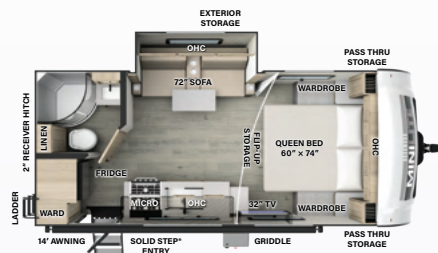
Apple and App Store are registered trademarks of Apple Inc. Google Play and the Google Play logo are trademarks of Google LLC.



FOREST RIVER

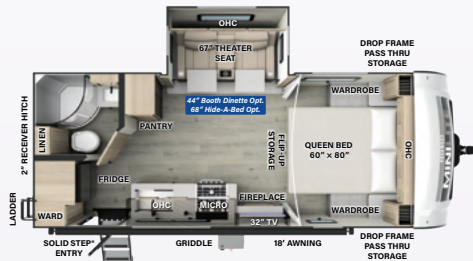
FORESTRIVERINC.COM

# MINI LITE FLOORPLANS



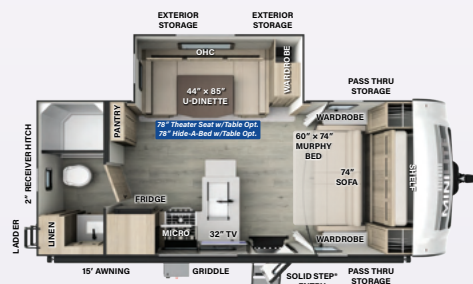
**2109S**

LENGTH: 22' 4" WIDTH: 8' HEIGHT: 10' 3" HITCH: 557 AXLE: 3877  
 UVW: 4493 CCC: 1344 **F** 54 GAL **G** 29 GAL **B** 29 GAL



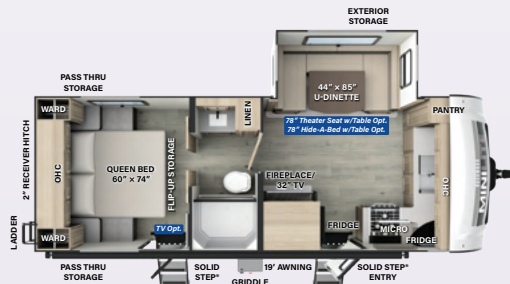
**2205S**

LENGTH: 23' 10" WIDTH: 8' HEIGHT: 10' 11" HITCH: 634 AXLE: 4439  
 UVW: 5132 CCC: 1662 **F** 54 GAL **G** 29 GAL **B** 29 GAL



**NEW!**  
**2214S**

LENGTH: 23' 10" WIDTH: 8' HEIGHT: 10' 11" HITCH: 748 AXLE: 4468  
 UVW: 5275 CCC: 1550 **F** 54 GAL **G** 29 GAL **B** 29 GAL



**NEW!**  
**2506FK**

LENGTH: 25' 11" WIDTH: 8' HEIGHT: 10' 11" HITCH: 820 AXLE: 4810  
 UVW: 5689 CCC: 2131 **F** 54 GAL **G** 58 GAL **B** 29 GAL

## SUPERIOR CONSTRUCTION

1. Complete **Composite** Wall Construction
2. Fully **Laminated** Walkable Roof
3. 6-Sided Full-Aluminum Frame
4. Aluminum Truss Roof Bracing<sup>1</sup>
5. 5/8" Tongue & Groove Plywood Floor
6. Aluminum Floor Joists
7. Painted Fiberglass Front Cap w/ Clear Coat<sup>2</sup>
8. Automotive Glass Windshield

## STANDARD FEATURES

9. 200W Solar Panel with 1800W Inverter & 30 AMP Charge Controller
10. Back-Up Camera Prep
11. Maxxair Fan with Cover
12. Winegard Air 360+ Prepped for Wi-Fi
13. Frameless Windows
14. Key-Alike Lock System
15. Slam Baggage Doors
16. PSX2 Power Stabilizers<sup>3</sup>
17. Additional Solar Prep
18. Double Battery Boxes
19. Double 30 Lb. LP Tanks

## SAFETY STANDARDS

20. Nitrogen-Filled Goodyear Endurance Tires w/ Balancing Beads
21. TST Tire Pressure Monitoring
22. Dexter® Torflex® Axles
23. MORryde Strut Assist Steps<sup>4</sup>

## CLIMATE PROTECTION PACKAGE

24. 12V Thermostat-Controlled Heated Tanks
25. Radiant Foil in Front Cap, Underbelly, and Slides

## OPTIONAL FEATURES

26. Power Package (Select Models)<sup>5</sup>
27. Additional 200W Solar Panel
28. 3.0 Auto-Leveling<sup>1</sup>
29. Slide Toppers
30. 2nd A/C (Soft Start)<sup>5</sup> Where Applicable<sup>5</sup>

<sup>1</sup> Ultra Lite Only. <sup>2</sup> Ultra Lite Only; Mini Lite comes with a fiberglass front cap.  
<sup>3</sup> Ultra Lite Only; Optional on Mini Lite. <sup>4</sup> N/A Mini Lite 2109S <sup>5</sup> Mini Lite Only.

## Slide Options

Model	Theater Seat	Hide-A-Bed	Table & Chairs	Booth Dinette
Mini Lite Travel Trailers				
2109S				
2205S	Standard	✓		✓
2214S	✓	✓		Standard U-Dinette
2506FK	✓	✓		Standard U-Dinette
2509S	✓	✓		Standard U-Dinette
2511S	Standard	✓		✓
2513S	Standard	✓		✓
2515S	Standard	✓		
2516S	Standard	✓		
2517S	✓	✓		Standard
2518S	Standard	✓		
2519S	✓	✓		Standard U-Dinette
2520BH	✓	✓		Standard U-Dinette
Ultra Lite Travel Trailers				
2606WS	Standard	✓	✓	Standard
2608BS	Standard	✓	✓	Standard
2614BS	Standard	✓	✓	Standard
2616BH	Standard	✓		✓
2618RD	Standard	✓		
2619FK	Standard	✓		
2706BH	Standard	✓	✓	Standard U-Dinette
2906BS	Standard		✓	Standard
2908RL		Standard		
2918BH	Standard	✓		

# ROCKWOOD MINILITE ULTRA LITE

Rockwood's Mini Lite and Ultra Lite provide one of the best values in the lightweight travel trailer market. Both models are built with superior build quality that exceed Rockwood's reputation.

## POWER PACKAGE

### Option Includes:\*

- 15A Receptacle Charging w/ Combimaster Power Sharing Feature
- 3000W Inverter/Charger w/160A Charging Capacity
- 13,500 BTU Soft Start Power Saver A/C
- 5" Touchscreen monitor
- 50A DC/DC Charger —New!
- 460Ah Mastervolt Lithium Battery
- Integrated 60A MPPT Charge Controller
- (5) 200W GoPower® Solar Panels
- Centralized System Disconnect Switch

\*Power Package available in Select Mini Lite Models Only.

Look for the Power Package Icon Next to the Floorplan.

## WeRV App Control

Your RV is equipped with Lippert™ One Control®. This WiFi app-based interface provides comfort and convenience to control and monitor your RV's functions. Visit [lippert.com/onecontrol](http://lippert.com/onecontrol) for a complete list of capabilities.



**Download Today!**



Apple and App Store are registered trademarks of Apple Inc. Google Play and the Google Play logo are trademarks of Google LLC.

## MINI LITE FLOORPLANS

UVW is Unloaded Vehicle Weight. Scan QR on back cover for further specification definitions.

## ULTRA LITE FLOORPLANS

**2509S** LENGTH: 25' 11" WIDTH: 8' HEIGHT: 10' 11" HITCH: 773 AXLE: 4667  
 UVW: 5499 CCC: 1434 **F** 54 GAL **G** 29 GAL **B** 29 GAL

**2511S** LENGTH: 25' 10" WIDTH: 8' HEIGHT: 10' 11" HITCH: 697 AXLE: 5000  
 UVW: 5756 CCC: 1941 **F** 54 GAL **G** 58 GAL **B** 29 GAL

**2606WS** LENGTH: 29' 9" WIDTH: 8' HEIGHT: 11' 2" HITCH: 840 AXLE: 5742  
 UVW: 6641 CCC: 1999 **F** 54 GAL **G** 90 GAL **B** 45 GAL

**2608BS** LENGTH: 29' 8" WIDTH: 8' HEIGHT: 11' 2" HITCH: 946 AXLE: 5831  
 UVW: 6836 CCC: 1910 **F** 54 GAL **G** 90 GAL **B** 45 GAL

**2513S** LENGTH: 25' 10" WIDTH: 8' HEIGHT: 10' 11" HITCH: 660 AXLE: 5252  
 UVW: 5971 CCC: 1689 **F** 54 GAL **G** 29 GAL **B** 29 GAL

**2515S** LENGTH: 25' 10" WIDTH: 8' HEIGHT: 10' 11" HITCH: 681 AXLE: 5112  
 UVW: 5852 CCC: 1829 **F** 54 GAL **G** 58 GAL **B** 29 GAL

**2614BS** LENGTH: 29' 9" WIDTH: 8' HEIGHT: 11' 2" HITCH: 796 AXLE: 6133  
 UVW: 6988 CCC: 1608 **F** 54 GAL **G** 90 GAL **B** 45 GAL

**2616BH** LENGTH: 29' 9" WIDTH: 8' HEIGHT: 11' 3" HITCH: 938 AXLE: 6137  
 UVW: 7134 CCC: 1604 **F** 54 GAL **G** 90 GAL **B** 45 GAL

**2516S** LENGTH: 25' 11" WIDTH: 8' HEIGHT: 10' 11" HITCH: 778 AXLE: 5340  
 UVW: 6177 CCC: 1601 **F** 54 GAL **G** 58 GAL **B** 29 GAL

**2517S** LENGTH: 25' 11" WIDTH: 8' HEIGHT: 10' 11" HITCH: 615 AXLE: 5100  
 UVW: 5774 CCC: 1841 **F** 54 GAL **G** 29 GAL **B** 29 GAL

**NEW!**  
**2618RD** LENGTH: 29' 9" WIDTH: 8' HEIGHT: 11' 3" HITCH: 716 AXLE: 5734  
 UVW: 6509 CCC: 2007 **F** 54 GAL **G** 45 GAL **B** 45 GAL

**NEW!**  
**2619FK** LENGTH: 29' 8" WIDTH: 8' HEIGHT: 11' 3" HITCH: 825 AXLE: 5950  
 UVW: 6834 CCC: 1791 **F** 54 GAL **G** 90 GAL **B** 45 GAL

**2518S** LENGTH: 25' 10" WIDTH: 8' HEIGHT: 10' 11" HITCH: 645 AXLE: 4915  
 UVW: 5619 CCC: 2026 **F** 54 GAL **G** 58 GAL **B** 29 GAL

**NEW!**  
**2519S** LENGTH: 25' 10" WIDTH: 8' HEIGHT: 10' 11" HITCH: 660 AXLE: 5290  
 UVW: 6009 CCC: 1651 **F** 54 GAL **G** 29 GAL **B** 29 GAL

**2706BH** LENGTH: 32' 10" WIDTH: 8' HEIGHT: 11' 2" HITCH: 790 AXLE: 6210  
 UVW: 7059 CCC: 1531 **F** 54 GAL **G** 90 GAL **B** 45 GAL

**2906BS** LENGTH: 35' 5" WIDTH: 8' HEIGHT: 11' 3" HITCH: 1100 AXLE: 7400  
 UVW: 8559 CCC: 1341 **F** 54 GAL **G** 45 GAL **B** 45 GAL

For half a century, we have proudly and passionately crafted recreational vehicles that have become synonymous with quality, innovation, and adventure.

Since our establishment in 1974, we've committed ourselves to putting quality first and doing things right, every step of the way.

**50** CELEBRATING YEARS  
**ROCKWOOD** SINCE 1974

**NEW!**  
**2520BH** LENGTH: 25' 10" WIDTH: 8' HEIGHT: 10' 11" HITCH: 580 AXLE: 4955  
 UVW: 5594 CCC: 1986 **F** 54 GAL **G** 29 GAL **B** 29 GAL

**2908RL** LENGTH: 35' 5" WIDTH: 8' HEIGHT: 11' 2" HITCH: 930 AXLE: 7295  
 UVW: 8284 CCC: 1446 **F** 54 GAL **G** 45 GAL **B** 45 GAL

**NEW!**  
**2918BH** LENGTH: 35' 5" WIDTH: 8' HEIGHT: 11' 2" HITCH: 920 AXLE: 6893  
 UVW: 7872 CCC: 2028 **F** 54 GAL **G** 90 GAL **B** 90 GAL

# ROCKWOOD

201 WEST ELM MILLERSBURG, IN 46543  
WWW.FORESTRIVERINC.COM/ROCKWOOD  
574.642.2640



RV WITH US



@RockwoodRVs

# 50

CELEBRATING  
YEARS



## Rockwood Warranty. Our Promise.

FOR DETAILS ON ROCKWOOD'S COMPLETE WARRANTY PROGRAM, SEE YOUR ROCKWOOD DEALER.

When it comes to backing products with the same quality and commitment it does when it begins the manufacturing process, the only name you have to remember when you're looking for a recreational vehicle is Rockwood. Rockwood offers the following additional limited warranties to the original purchasers. Consult written warranty for details.

**1** Limited Lifetime roofing warranty.\*

**2** Two-year fiberglass warranty.

**3** Ten-year Torflex® axle warranty.

**4** One-year bumper to bumper warranty.

\*Lifetime warranty is limited to original owner

## MINI LITE/ULTRA LITE PACKAGES

### MINI LITE TRAVEL TRAILER STANDARD PACKAGE D

- White/Alloy 2 Tone Fiberglass Exterior
- High Gloss Front Cap
- Automotive Front Windshield
- Power Tongue Jack
- Stabilizer Jacks
- Composite Structural Exterior Walls
- Vacuum Laminated Roof
- Aluminum Cage Construction
- Frameless Windows
- Slam Latch Baggage Doors w/Magnetic Catch
- 15,000 BTU A/C
- Enclosed Underbelly w/Thermostatically Controlled Heated Holding Tanks
- Pre-wire for Backup Camera
- Power Awning
- 200W Solar Panel w/Inverter & Additional Solar Side Port
- AIR 360+ Omnidirectional Antenna w/WI-FI Prep
- One Control® App Monitor Panel
- Smart TV
- 12V Smart Entertainment TV w/Stereo
- 12V Refrigerator
- Fireplace (Where Available)
- 6 Gallon Quick Recovery Auto Ignite Gas/Electric Water Heater
- Dexter® Torflex® Torsion Axles
- Goodyear Endurance Tires w/TPMS
- Roller Shades
- MORryde Strut Assist
- Steps (Strut N/A 2 Step)
- Key Alike Doors
- Undermount Kitchen Sink w/High Rise Faucet
- Solid Surface Kitchen Countertops
- Soft Close Roller Bearing Drawers
- Hidden Hinge Cabinet Doors
- Rear Ladder
- Black Tank Flush
- Water Saver Shower Miser
- Exterior Hot/Cold Water Port
- Gas Griddle
- 2" Accessory Hitch
- Spare Tire Carrier & Cover

### OPTIONS

- Thermopane Windows
- 2 Soft Start 13.5 Roof A/C IPO STD 15K A/C (N/A 2109S, 2205S, 2214S)
- Slide Topper (2109S, 2205S, 2214S, 2506FK, 2509S, 2517S, 2518S, 2520BH)
- 2 Slide Toppers (251S, 2513S, 2515S, 2516S, 2519S)
- Bunk Entertainment TV (2519S)
- Smart Bedroom TV
- Theater Seat IPO King Dinette (2214S, 2506FK, 2509S, 2517S, 2519S, 2520BH)
- Hide-A-Bed IPO Theater Seating (2205S, 2511S, 2513S, 2515S, 2516S, 2518S)
- Dinette IPO Theater Seating (2205S, 2511S, 2513S)
- Hide-A-Bed IPO Dinette (2214S, 2506S, 2509S, 2517S, 2519S, 2520BH)
- Extra 200W Roof Solar Panel
- 4 Power Stab Jacks
- Extra Maxxair Vent Fan & Cover (N/A w/2nd A/C)
- Power Package (N/A 2109S, 2506FK, 2516S)

### ULTRA LITE TRAVEL TRAILER STANDARD PACKAGE F

- White Fiberglass Exterior
- High Gloss Fiberglass Cap & Composite Structural Exterior Walls
- Vacuum Laminated Roof
- Aluminum Cage Construction
- Front Windshield
- Frameless Windows
- Slam Latch Baggage Doors w/Magnetic Catch
- 15,000 BTU A/C
- Enclosed Underbelly w/Thermostatically Controlled Heated Holding Tanks
- Pre-wire for Backup Camera
- Power Awning
- 200W Solar Panel w/Inverter & Additional Solar Side Port
- AIR 360+ Omnidirectional Antenna w/WI-FI Prep
- One Control® App Monitor Panel
- Smart TV
- Bunkroom Smart Entertainment TV
- 50 AMP Service
- 12V Refrigerator
- Fireplace (Where Available)
- 6 Gallon Quick Recovery Auto Ignite Gas/Electric Water Heater
- Dexter® Torflex® Torsion Axles
- Goodyear Endurance Tires w/TPMS
- Roller Shades
- MORryde Strut Assist Steps
- Key Alike Doors
- Undermount Kitchen Sink w/High Rise Faucet
- Solid Surface Kitchen Countertops
- Soft Close Roller Bearing Drawers
- Hidden Hinge Cabinet Doors
- Rear Ladder
- Black Tank Flush
- Shower Miser
- Exterior Hot/Cold Water Port
- Gas Griddle
- 2" Accessory Hitch
- Spare Tire Carrier & Cover

### OPTIONS

- Andover Sable Woodgrain w/Solid Doors
- Thermopane Windows
- 15K BTU 2nd Roof A/C with Heat
- Slide Topper (2706BH, 2918BH)
- 2 Slide Toppers (2606WS, 2608BS, 2614BS, 2618RD, 2619FK)
- 3 Slide Toppers (2616BH, 2906BS, 2908RL)
- Day/Night Roller Shades in Living Room and Kitchen
- Smart Bedroom TV
- Bunk Entertainment TV (2616BH, 2918BH)
- Free Standing Table & Chairs (2606WS, 2608BS, 2614BS, 2706BH, 2906BS)
- Hide-A-Bed IPO Theater Seating (N/A 2906BS, 2908RL)
- 2 Swivel Recliners IPO HAB Sofa (2906BS)
- 2 Swivel Recliners IPO Dinette (2618RD)
- King Bed IPO Queen Bed (2906BS, 2619FK)
- Extra 200W Roof Solar Panel
- Bal 5.3 Leveling Option
- Front Sliding Storage Tray (2706BH, 2918BH, 2606WS, 2616BH)
- Front Door IPO Window (2706BH)
- Desk IPO Front Door (2614BS)
- Extra Maxxair Vent Fan & Cover - Bunk Room (2616BH)
- Extra Maxxair Ventilation Fan and Vent Cover - Bedroom (N/A with STD 2nd A/C)
- Extra Maxxair Vent Fan & Cover - Kitchen/Living Room
- Dinette IPO Bunk Sofa (2616BH)

## EACH NEW FOREST RIVER PURCHASE PROVIDES:

- ✓ Pre-delivery Inspection.
- ✓ Digital Owner's Manual.
- ✓ Free Membership to Forest River Owners Group (FROG). Learn more at [www.forestriverfrog.com](http://www.forestriverfrog.com).
- ✓ A Contribution to Care Camps Foundation [www.carecamps.org](http://www.carecamps.org).
- ✓ 1 Year Free Roadside Assistance from Date of Purchase.



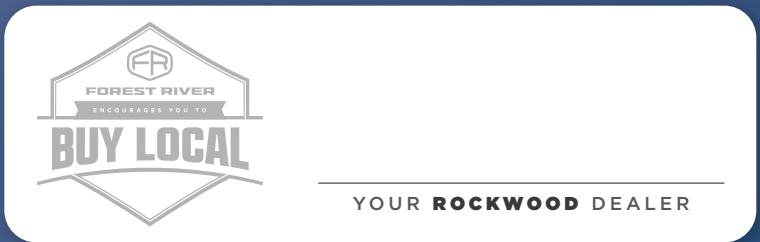
## SPECIFICATION DEFINITIONS:

Scan this barcode using a QR reader on your smartphone to learn RV terminology and more!



## LEARN MORE:

Scan this QR code with your mobile device to learn more about Forest River.



YOUR **ROCKWOOD** DEALER

All information contained in this brochure is believed to be accurate at the time of publication. However, during any model year, it may be necessary to make changes to the manufacturing process of the units and information in this brochure. Your unit may differ from the information in this brochure due to any changes in the manufacturing process and equipment. Forest River, Inc., reserves the right to make all such changes without notice, including prices, colors, combinations, materials, equipment and specifications of any model as well as the addition of new models and the discontinuance of models shown in this brochure. Therefore, please consult with your Forest River dealer and confirm the availability of any materials, combinations, designs, or specifications that are meaningful to your purchase decision. © 2024 Rockwood, a Division of Forest River, Inc., a Berkshire Hathaway Company. All Rights Reserved. Forest River, Inc. 12/24